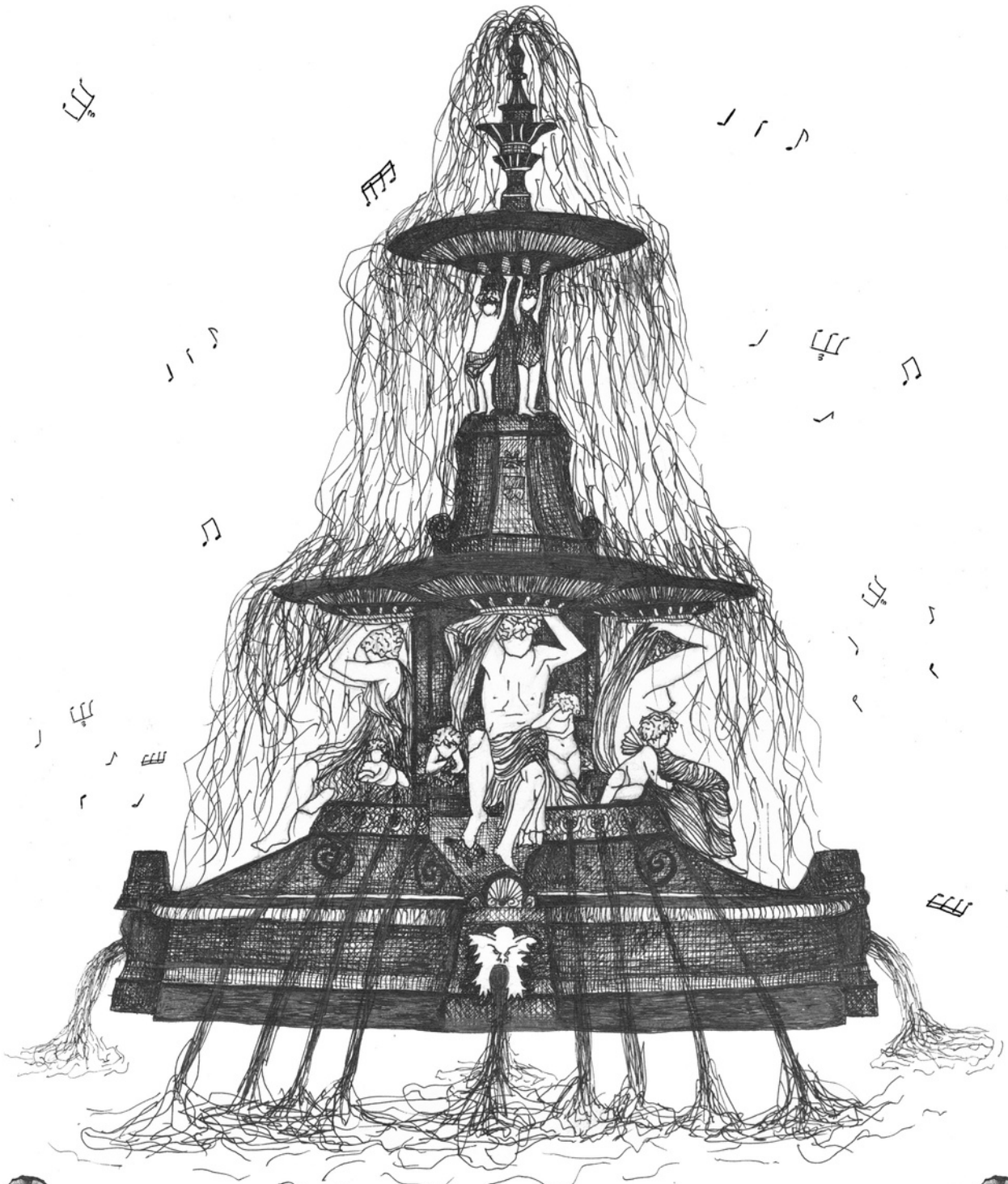


Fantasy Fountain

by Emily Peasgood

With inspiration from the local community
and Illustrations by Djuna Mount

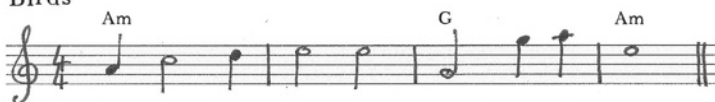


Mr Harper's Musical Fountain Edition
The Victoria Park and Watercress Fields Project
Ashford, Kent

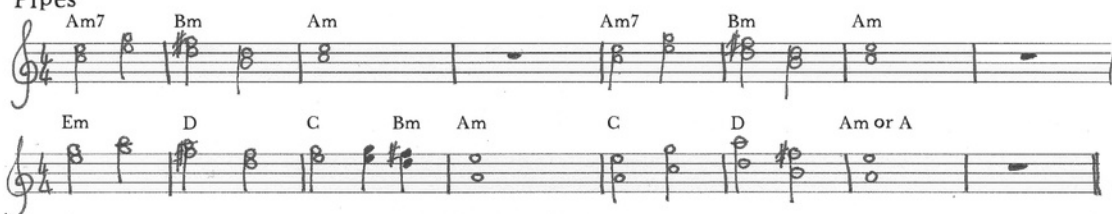
Fantasy Fountain

Music by Emily Peasgood

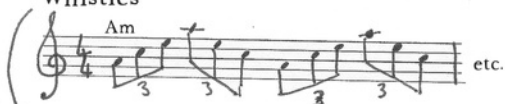
Birds



Pipes



Whistles



Conch



Water trumpets



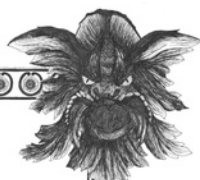
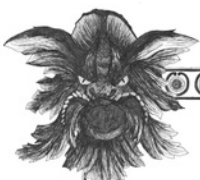
Farty trumpet



Bells



Performance note: This music contains the most important elements of Fantasy Fountain, an electronic acousmatic composition featuring sounds created with local people. See which bits go together, and if you can add ideas of your own. Try different pipes, whistles, bells and trumpets, alter the speed or perhaps change the order of things. Creating your own unique version will conjure the mystery and the magic of Fantasy Fountain.



The Mystery of the Musical Fountain

Fantasy Fountain is a research project and musical composition inspired by the Hubert Fountain, also known as Mr Harper's Musical Fountain. The fountain was originally created to showcase the work of the Val d'Osne foundry at the International Exhibition of 1862. It exhibited in the Royal Horticultural Society Gardens in South Kensington, London and was said to be a fine monumental work. So fine, the Royal Horticultural Society wanted to keep the fountain. Many members made donations but at £4000, they could not afford to buy it; not even when it was offered to them at half the price. It was instead purchased by Major Erle-Drax for his house in Olantigh near Wye. He paid £3000 which is £405,000 today!

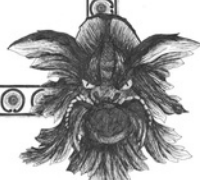

Mr Harper was a local antiques dealer and philanthropist who bought the fountain from Erle-Drax in 1910. He wanted to offer it as a gift to the town he loved. However, the Council initially refused this gift as the installation costs were high. Following a period of negotiation, Mr Harper agreed to pay for the installation on the condition it was turned on every 23rd of July to celebrate his birthday. It has lived in Victoria Park on Jemmett Road in Ashford since.

There is, however, an unsolved mystery. Mr Harper believed there was originally a musical device in the fountain; that audiences would have been delighted to hear its music at the International Exhibition of 1862. In the 1912 programme from the fountain's opening ceremony at Victoria Park, it even says the fountain "originally possessed a set of sixty-four whistles which were actuated by the water". I have searched far and wide for evidence that the fountain was musical. Its music is not mentioned in the many reports I have read on the International Exhibition, and when I spoke to the Val d'Osne foundry (today called GHM), they confirmed that the Hubert Fountain was never musical. Did Mr Harper create this fantastical idea to persuade the Council to accept his gift? Perhaps he had a vivid imagination? Or maybe Erle-Drax of Olantigh told him a fib to make the sale? We shall never know.

What we can say is Mr Harper's Musical Fountain is a fantastical idea, kept alive by local people for more than 100 years. Fantasy Fountain celebrates this mystery in a piece of music that captures magic and myth, featuring the bird sounds, whistles, pipes, bells and water trumpets it is believed to have once made.

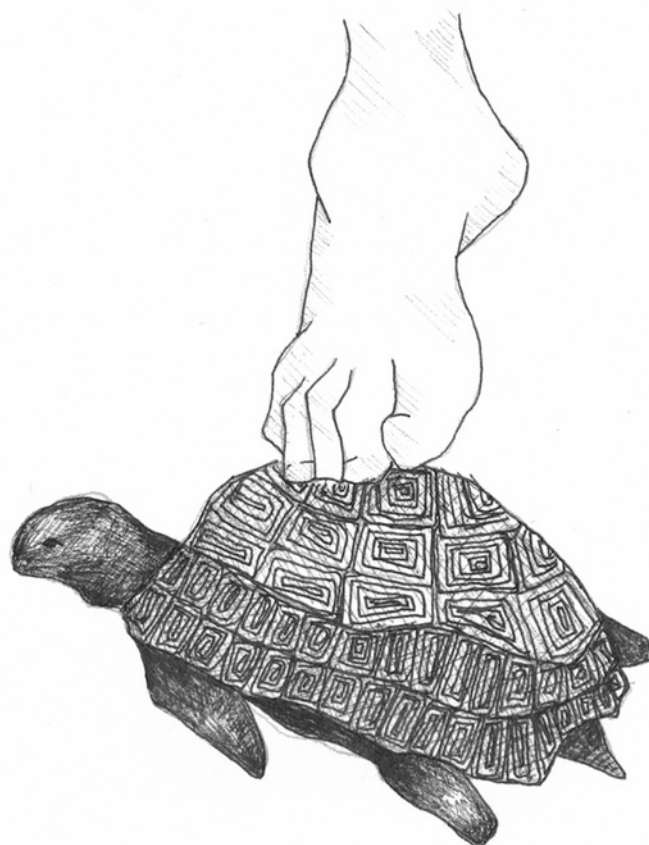
Fantasy Fountain premiered on 23rd July 2022 in front of the Hubert Fountain, featuring sounds and ideas made in workshops with local children and adults; a recording of which will be made available at a listening point in the near future. This musical score is 1 of 150 limited edition musical scores given to audience members on that day. Please keep it safe for future generations.

To read our research and find out more, please visit:
emilypeasgood.com/fantasy-fountain





Fantasy Fountain was commissioned by
The Victoria Park and Watercress Fields Project,
Ashford Borough Council.



With thanks to: Ashford Library, Ashford Museum, Ashford Oaks Primary School,
Benchick B Burre, Chris Dixon, Dani Osoba, Djuna Mount, Evie Laker, Louise Laker,
Millbank Reception Centre, Nicola Priest, Sam Slattery and National Lottery Heritage Fund.



COMMUNITY
FUND



Heritage
Fund

Published 16 July 2022 by Emily Peasgood
Rubber Chicken House, 2 Kent Place, Ramsgate, Kent, CT11 8LT
www.emilypeasgood.com

Illustrations and typesetting by Djuna Mount
Printed by Seaward Copy Shop, Broadstairs Kent

ISMN 979-0-9002484-2-8



9 790900 248428



 **Ashford**
Borough Council

